

# A hybrid Multi-Response Optimization for the Best Biofuel Blend Selection using AHP–TOPSIS Methods

Aparna V. Kulkarni<sup>1\*</sup>, Dyaneshwar G. Kumbhar<sup>2</sup>, Kailasnath B. Sutar<sup>3</sup>

<sup>1</sup>Bharati Vidyapeeth (Deemed to be University), College of Engineering, Pune- 411043, India.

Emails: av.aparna@gmail.com<sup>1</sup>, dgkumbhar@bvucoep.edu.in<sup>2</sup>, kbsutar@bvucoep.edu.in<sup>3</sup>

**Abstract:** The selection of an appropriate biofuel blend is a multi-criteria decision-making (MCDM) dilemma based on various qualitative and inconsistent criteria, which are crucial for determining the feasibility of new energy sources. This paper presents a hybrid methodology using the analytical hierarchy process (AHP) to compute the relative criteria weights, whereas the technique for order of preference by similarity to ideal solution (TOPSIS) was used to rank the available alternatives. The results indicated that brake thermal efficiency (BTE) and nitric oxides (NO<sub>x</sub>) are the two most important criteria for rating the performance of a biofuel blend. The following preferences were attained for the blends by using the hybrid AHP–TOPSIS method: BD20CeO200 > BD100CeO200 > D > BD20 > BD100. Hence, after using the hybrid MCDM methods for various biofuel blends, the BD20 with Cerium oxide nanoparticles (200 ppm) was selected as the best biofuel blend for operating CI engines.

**Keywords:** MCDM, AHP, TOPSIS, Best blend

## I. INTRODUCTION

Multi-criteria decision making (MCDM) combines mathematical and computational tools to determine the most appropriate alternative in terms of numerous performance criteria. Many studies have employed MCDM to solve complex and tedious problems in fields such as engineering, science, technology, and economics [1]. The selection of appropriate alternative fuel for IC engine is one such multi-response optimization problem. Contradictory objectives such as BTE, BSFC, HC, CO, NO<sub>x</sub>, etc have always been a research interest for optimization. The proposed AHP provided comparative weights of the decision criteria sets present and indicated their inter-relations, whereas TOPSIS and GRA were used to identify the optimal alternative. The advantages of the hybrid MCDM method include simplicity, consistency, lucidity, and good computational efficiency [2].

Determining the relative significance of different criteria for evaluating the best biofuel blend is a tedious task. Therefore, AHP is a very useful tool for capturing the variability in a decision. AHP is a subjective data-oriented MCDM method which combined the qualitative as well as quantitative criteria in the multi-response decision-making process. However, it does not explore the uncertain relationships and interdependency between the factors in a system. A hierarchical structure and pair-wise comparisons are used in AHP to prioritize the criteria according to their eigen values. The eigen value method is employed for the same which specifies that the eigen vector consequent to the largest eigen value of the pair-wise comparison matrix provides the comparative priorities of the factors and maintains ordinal preferences among the alternatives. Then AHP method assigns relative weights to each evaluation criterion based on the

decision maker's pairwise comparisons. Greater relative weights indicate the importance of the associated criterion. Thus AHP can be employed as a constructive method that integrating subjective human judgments with objective assessment through the Eigenvector method. This method ensures consistency in the decision maker's evaluations, minimizing biases in the decision-making process. In recent studies, the hybrid AHP has been proposed as a replacement for the classical AHP [3-5]. The hybrid method relies on the comprehensive role while selecting an appropriate solution from a finite set of options. The selected option is closer to the positive ideal solution and farthest from the negative ideal solution. TOPSIS, which was developed by Hwang and Yoon, is a conventional method for resolving an MCDM problem. In the TOPSIS method, both the performance ratings and the relative criteria weights are expressed as crisp values [5]. As in other MCDA tools, the characteristics and options should be fixed before the commencement of TOPSIS.

Tzeng et al. used AHP to assign the relative criteria weights while selecting the optimal alternative fuel. They also used the TOPSIS and VIKOR methods for comparison. Hybrid electric buses are the most suitable mode of public transport in the urban areas of Taiwan [6]. Sakthivel et al. used a hybrid MDCA, in which an analytic network process (ANP) was integrated with the TOPSIS and VIKOR methods to assess the optimal biodiesel blend. The BD20 fish oil biodiesel blend was found to be optimal for IC engines [7]. Ren and Liang used the fuzzy logarithmic least squares approach and fuzzy TOPSIS to determine the relative weights of subcriteria for evaluating the sustainability of marine fuels. In their study, hydrogen fuel was found to be the appropriate marine fuel for shipping [8].

Wu et al. proposed an integration of ANP and TOPSIS to evaluate and identify the most suitable marketing strategy. [9]. Choudhary et al. propose a framework combining fuzzy AHP and TOPSIS to evaluate and select the best locations for Thermal Power Plants in India, considering social, technical, economic, environmental, and political (STEEP) factors. Also, a sensitivity analysis was conducted to interpret and validate the results [10]. Prakash et al. focus on identifying and ranking the solutions of reverse logistics adoption in the electronics industry to overcome its barriers using the Fuzzy AHP-TOPSIS methodology. Finally, sensitivity analysis is performed to illustrate the robustness of the method [11]. Patil et al. put forward a stepwise scientific framework based on fuzzy AHP -TOPSIS to identify and rank the solutions of knowledge management adoption in supply chain using an empirical case study to overcome its barriers [12]. Pitchipoo et al. introduced the hybridization of AHP and GRA for systematically best supplier selection. They also evaluated the



effectiveness of the integrated AHP-GRA model [13]. Mu Rui et al. developed a new hierarchy-based GRA, by utilizing AHP, HHOQ, and GRA methods for expediting the related decision-making process [14]. Ghorabae et al. studied several publications related to multi-criteria decision-making techniques, including book chapters and papers from peer-reviewed journals and reputable conferences from 2001 to 2016; this review illustrated numerous major combinations of hybrid multi-criteria decision-making techniques, and the results revealed that AHP-TOPSIS was the most popular technique than AHP-GRA [15]. Amit R. Patil et al. validated composite fuel additives for CI engines using Taguchi, TOPSIS, GRA, and AHP optimization methods; all optimization methods yielded consistent results, all confirming the superiority of sample D8EH6E4 [16]. A. R. Patil et al. address the stringent emission norms and the uncertainty of diesel vehicles; a novel multi-additive fuel blend (dimethyl carbonate, 2-ethylhexyl nitrate, ethyl acetate) was developed. Sixteen combinations were tested using Taguchi DOE and optimized via TOPSIS, identifying blend D8EH6E4. This blend achieved a 19% average NO<sub>x</sub> reduction and notable smoke reduction at high loads without compromising performance or fuel economy [17].

Very few studies have been conducted on selecting an appropriate biofuel blend based on the overall engine characteristics by using a hybrid MCDM method. Therefore, in this study, hybrid MCDM methodological tools such as AHP-TOPSIS was utilized to achieve better engine performance, combustion, and environmental benefits by decreasing harmful emissions. The objective of this study was to select the best biofuel blend for diesel engines using multi-response optimization of engine operating parameters. To achieve this aim, a hierarchy based hybrid models were proposed by considering eight sub-criteria and five alternatives.

## II. PROPOSED RESEARCH METHODOLOGY

The schematic of the proposed hybrid MCDM method is displayed in Fig.1. In the first stage, after the problem is defined and the goal is determined, the identification of the available alternatives and their evaluation criteria is a major task. Then, based on the identification, the decision hierarchy was framed, which percolates their interconnectivity as shown in Fig.2. The decision hierarchies generally have four basic levels, such as the objective of the problem, main criteria, sub-criteria, and the alternatives, which are situated at the level-by-level respectively. In the second stage, a diesel engine was operated at a constant speed (1500 rpm) with various biofuel blends at different loading conditions to obtain the experimental data. The experimental setup consisted of a single-cylinder, four-stroke, direct-injection (DI), variable compression ratio (VCR), and compression ignition (CI) engine, coupled with an eddy current dynamometer for applying load. The setup was equipped with crucial instruments such as an in-cylinder pressure transducer, a crank angle encoder, a fuel flow measurement system, thermocouples, a five-gas analyser, and a strain gauge load cell interfaced with a computer through a prompt data acquisition device. The engine was run at a steady speed of 1500 rpm with a constant air intake and cooling water flow rate under various loading conditions. Prior to actual engine testing, all the instruments, sensors, and thermocouples were calibrated to obtain accurate results. Standard diesel was utilized for initiating and warming up the engine. Additionally,

all tests were conducted, and parameters were measured under steady-state conditions.

Then, the pair-wise comparison matrix was prepared by using Saaty's preference scale to calculate the relative weights of the sub-criteria [18]. An unbiased weight is assigned for all decisive factors of the hierarchy, permitting varied and incommensurable criteria to be evaluated with each other realistically and consistently, which differentiates AHP from other similar methods, such as personal experience and linear-weighting models. In this work, the author has used the literature survey and experts' opinions to identify the evaluation criteria and their relative weights for selection of best blend. Finally, the TOPSIS, as well as GRA ranking methods, were used to rank the available alternatives based on the experimentally measured data and relative weights of the evaluation criteria [19,20].

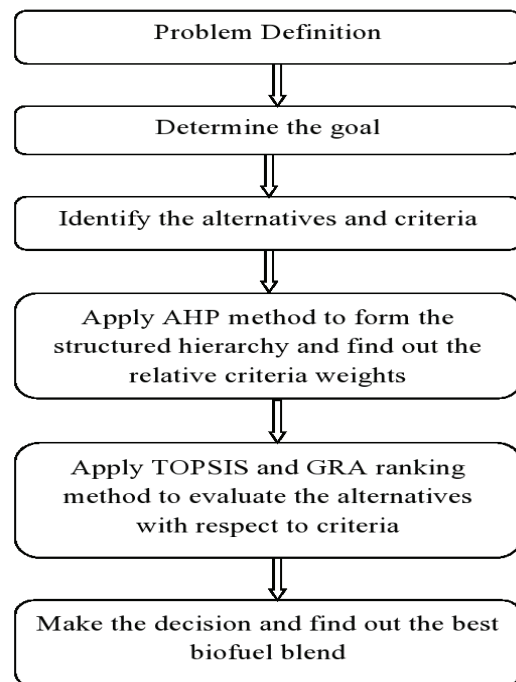


Fig. 1. Steps of the proposed hybrid MCDM methods

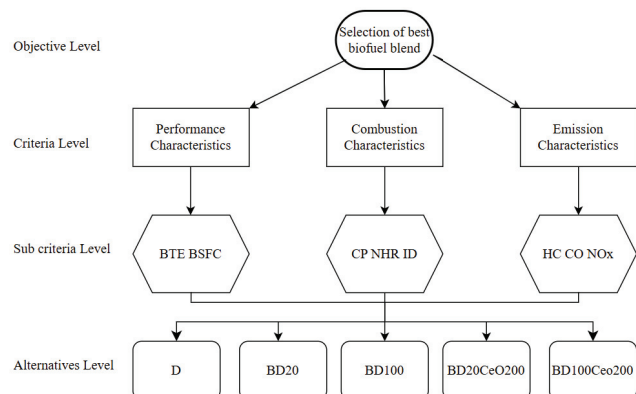


Fig. 2. Decision hierarchy for the proposed AHP model

### A. The stepwise procedure of the AHP model

#### Step - 1

Structuring the decision problem as a hierarchy of goals, criteria, sub-criteria, and alternatives.

## Step - 2

Prepare a pair-wise comparison matrix and establish priorities among the elements in the hierarchy using Saaty's nine-point preference scale.

Let  $X$  be an  $n \times n$  pair-wise comparison matrix:

$$X = \begin{bmatrix} x_{11} & x_{12} & \cdots & x_{1n} \\ x_{21} & x_{22} & \cdots & x_{2n} \\ \vdots & \vdots & \ddots & \vdots \\ x_{n1} & x_{n2} & \cdots & x_{nn} \end{bmatrix}$$

Here, all diagonal elements are equal to 1.

## Step - 3

Normalize the matrix as follows:

$$W_j = \left[ \frac{x_{ij}}{\sum_{i=1}^n x_{ij}} \right]^T, \quad j = 1, 2, \dots, n$$

## Step - 4

Calculate the weighted average rating for each decision alternative by dividing the weighted sum vector by the criterion weight. Choose the one with the highest score.

## Step - 5

Calculate the consistency index (CI):

$$CI = \frac{(\lambda_{\max} - n)}{n - 1}$$

Where:

- $\lambda_{\max}$  = maximum eigenvalue of the matrix
- The lower value of CI indicates a smaller deviation from consistency.

## Step - 6

Determine the consistency ratio (CR):

$$CR = \frac{CI}{RI}$$

Where:

- RI = Random Index, which depends on the matrix size

For consistency, the CR value should be less than or equal to 0.1.

### B. The stepwise procedure of the TOPSIS model

#### Step 1: Construct the Decision Matrix

- List all alternatives and criteria.
- Construct a matrix showing the performance of each alternative with respect to each criterion.

#### Step 2: Normalize the Decision Matrix

- Use the normalization formula:

$$r_{ij} = \frac{x_{ij}}{\sqrt{\sum_{i=1}^m x_{ij}^2}}$$

Where  $X_{ij}$  is the value of the  $i$ th alternative with respect to the  $j$ th criterion.

#### Step 3: Construct the Weighted Normalized Decision Matrix

- Multiply each element of the normalized matrix by the corresponding criterion weight:

$$v_{ij} = w_j \cdot r_{ij}$$

Where  $W_j$  is the weight of the  $j$ th criterion.

#### Step 4: Determine the Positive Ideal and Negative Ideal Solutions

- Positive Ideal Solution (PIS):

$$A^+ = \{\max(v_{ij}) | j \in J_{benefit}; \min(v_{ij}) | j \in J_{cost}\}$$

- Negative Ideal Solution (NIS):

$$A^- = \{\min(v_{ij}) | j \in J_{benefit}; \max(v_{ij}) | j \in J_{cost}\}$$

#### Step 5: Calculate the Separation Measures

- Separation from Positive Ideal Solution:

$$S_i^+ = \sqrt{\sum_{j=1}^n (v_{ij} - v_j^+)^2}$$

- Separation from Negative Ideal Solution:

$$S_i^- = \sqrt{\sum_{j=1}^n (v_{ij} - v_j^-)^2}$$

#### Step 6: Calculate the Relative Closeness to the Ideal Solution

$$C_i^* = \frac{S_i^-}{S_i^+ + S_i^-}$$

Where  $C_i^*$  is the relative closeness of the  $i$ th alternative to the ideal solution.

#### Step 7: Rank the Alternatives

- Rank the alternatives in descending order of  $C_i^*$ .
- The alternative with the highest value  $C_i^*$  is considered the best.

### III. RESULTS AND DISCUSSION

Find out the best biofuel blend plays a critical role in biofuel usage in diesel engines. Researchers have found it difficult to recommend the most appropriate blend among the various proportions of biofuel blends because these blends have similar performance and emission characteristics, thus producing an inconsistency in attaining the stringent emission norms and overall engine performance without any modifications. To eradicate this problem, the hybrid AHP-

TOPSIS model was used to evaluate and rank the available biofuel blends. In this study, three criteria, eight sub-criteria, and five options were considered based on the available literature and expert opinions to create a performance-based model for determining the best biofuel blend.

By using AHP, a pair-wise comparison matrix was prepared and the relative criteria weights were obtained (Tables 1–3). To determine the reliability of the matrix, significant consistency measures such as the maximum eigen value ( $\lambda_{\max} = 8.2265$ ), random index ( $RI = 1.41$  was taken for 8 number of parameters as per Saaty's scale), consistency index ( $CI = 0.032$ ), and consistency ratio were calculated ( $CR = 0.022$ ). Based on a study by Saaty, if  $CR$  is less than 0.1, the matrix is consistent [16]. In this study, the  $CR$  value was 0.085, which indicated that the normalized weighted estimated matrix for numerous criteria was consistent. The result of AHP indicated that the relative significance of each sub-criteria was different, which ultimately helps to minimize the subjectivity and randomness. As presented in Table 4, two sub-criteria, namely, the brake thermal efficiency and nitrogen oxides attained the highest priority weights of 0.2568 and 0.1758, respectively. These values indicated their relative impact while ranking the best biofuel blend.

The experimental readings at 100% load were used to demonstrate the computational procedure of the proposed hybrid AHP–TOPSIS analysis, as shown in Table 4. After computing the relative weights of numerous sub-criteria, the TOPSIS method was used for evaluating the available options, based on the one closest to the positive ideal solution (PIS) while maintaining the greatest possible distance from the negative ideal solution (NIS). The normalization of a decision matrix and a weighted normalized decision matrix is presented in Tables 5 and 6. The closeness coefficient factor was considered for determining the ranking order of the available alternatives. The alternative BD20CeO200 achieved the highest rank among the available alternatives and had a closeness coefficient of 0.8486. Moreover, the alternative BD100 achieved the lowest rank among the available alternatives and had a closeness coefficient of 0.2995. The preference obtained for the blends by using the hybrid AHP–TOPSIS method was as follows: BD20CeO200 > BD100CeO200 > D > BD20 > BD100. The closeness coefficient of all the available alternatives for the various blends is presented in Table 7.

TABLE I. PAIR WISE COMPARISON MATRIX FOR CRITERIA

	BTE	BSFC	HC	CO	NO <sub>x</sub>	Peak Pressure	ID	NHR max
BTE	1	3	3	3	2	3	4	2
BSFC	0.33	1	1	1	0.25	0.33	2	0.33
HC	0.33	1	1	1	0.33	0.5	1	0.33
CO	0.33	1	1	1	0.33	0.5	1	0.33
NO <sub>x</sub>	0.5	4	3	3	1	3	5	1
Peak Pressure	0.33	3	2	2	0.33	1	3	0.5
ID	0.25	0.5	1	1	0.2	0.33	1	0.33
NHR max	0.5	3	3	3	1	2	3	1

TABLE II. MATRIX FOR RELATIVE CRITERIA WEIGHTS

	BTE	BSFC	HC	CO	NO <sub>x</sub>	Peak Pressure	ID	NHR max	Sum
BTE	0.2801	0.1818	0.2	0.2	0.3676	0.2814	0.2	0.3436	2.0546
BSFC	0.0924	0.0606	0.0666	0.0666	0.0459	0.0309	0.1	0.0567	0.5199
HC	0.0924	0.0606	0.0666	0.0666	0.0606	0.0469	0.05	0.0567	0.5006
CO	0.0924	0.0606	0.0666	0.0666	0.0606	0.0469	0.05	0.0567	0.5006
NO <sub>x</sub>	0.1400	0.2424	0.2	0.2	0.1838	0.2814	0.25	0.1718	1.6695
Peak Pressure	0.0924	0.1818	0.1333	0.1333	0.0606	0.0938	0.15	0.0859	0.9313
ID	0.0700	0.0303	0.0666	0.0666	0.0367	0.0309	0.05	0.0567	0.4080
NHR max	0.1400	0.1818	0.2	0.2	0.1838	0.1876	0.15	0.1718	1.4151



TABLE III. RESULTS OBTAINED WITH THE AHP

Sr. No.	Criteria	Weights	$\lambda$ max, CI, RCI	CR
1	BTE	0.2568	$\lambda$ max = 8.2265 CI = 0.0323 RCI = 1.41	CR = 0.022
2	BSFC	0.0649		
3	HC	0.0625		
4	CO	0.0625		
5	NO <sub>x</sub>	0.2086		
6	Peak Pressure	0.1164		
7	ID	0.0510		
8	NHR	0.1768		

TABLE IV. EXPERIMENTAL READINGS OBSERVED FROM THE ENGINE FOR VARIOUS ALTERNATIVE BLENDS

Blends	% Load	BTE (%)	BSFC (kg/kWh)	HC (%)	CO (%)	NO <sub>x</sub> (ppm)	Peak Pressure (bar)	ID (°CA)	NHR max (kJ/°CA)
Diesel	100	28.25	0.261	50	0.14	659	73.1	7.3	69.44
BD20	100	27.19	0.28	47	0.135	679	71.92	5.65	66.1
BD100	100	26.88	0.29	43	0.13	748	71.14	5.5	64.45
BD20 CeO200	100	28.38	0.225	39	0.12	639	73.68	5	67
BD100 CeO200	100	27.89	0.23	36	0.12	715	72.89	4.9	65.51

TABLE V. NORMALIZED DECISION MATRIX

Blends	% Load	BTE	BSFC	HC	CO	NO <sub>x</sub>	Peak Pressure	ID	NHR max
Diesel	100	0.455	0.451	0.516	0.484	0.427	0.450	0.569	0.466
BD20	100	0.438	0.484	0.484	0.467	0.440	0.443	0.440	0.444
BD100	100	0.433	0.501	0.444	0.449	0.485	0.438	0.428	0.433
BD20CeO 200	100	0.457	0.389	0.402	0.415	0.414	0.454	0.389	0.450
BD100CeO 200	100	0.449	0.397	0.371	0.415	0.464	0.449	0.382	0.440

TABLE VI. WEIGHTED NORMALIZED DECISION MATRIX

Blends	% Load	BTE	BSFC	HC	CO	NO <sub>x</sub>	Peak Pressure	ID	NHR max
Diesel	100	0.117	0.029	0.032	0.030	0.089	0.052	0.029	0.083
BD20	100	0.113	0.031	0.030	0.029	0.092	0.052	0.022	0.079
BD100	100	0.111	0.033	0.028	0.028	0.101	0.051	0.022	0.077
BD20CeO 200	100	0.118	0.025	0.025	0.026	0.087	0.053	0.020	0.080
BD100CeO 200	100	0.116	0.026	0.023	0.026	0.097	0.052	0.019	0.078

TABLE VII. POSITIVE AND NEGATIVE IDEAL SOLUTIONS, IDEAL CLOSENESS AND RANKING

Blends	% Load	SI+	SI-	CI	RANK
Diesel	100	0.01468	0.01671	0.53229	3
BD20	100	0.01338	0.01102	0.45159	4
BD100	100	0.01947	0.00832	0.29954	5
BD20CeO200	100	0.00351	0.01968	0.84865	1
BD100CeO200	100	0.01151	0.01433	0.55462	2

#### IV. CONCLUSION

The systematic evaluation using exploratory methodological tools are the basis for the subsequent selection of the best biofuel blend for diesel engines. In this study, a multifaceted perspective of various engine characteristics was used while selecting the best biofuel blend. This paper presents a hybrid methodology using AHP to compute the relative criteria weights, whereas TOPSIS was used to rank the available alternatives. The results indicated that the BTE and NO<sub>x</sub> are the two most crucial criteria for rating the performance of biofuel blends. The preferences were attained for the blends by using the hybrid AHP–TOPSIS method: BD20CeO200 > BD100CeO200 > D > BD20 > BD100. Hence, after comparing the various biofuel blends, the BD20 with cerium oxide nanoparticles (200 ppm) was selected as the best biofuel blend for operating CI engines. The proposed hybrid decision method enables researchers to gain new insight to recognize the most appropriate blend for enhancing the energy competency of engines by quantitatively and qualitatively studying the problem. For future research work, the results of the present study can be evaluated with those of other multi-criteria techniques like ELECTRE, PROMETHEE, or VIKOR.

#### REFERENCES

- [1] Tyagi M, Kumar P, Kumar D. A hybrid approach using AHP-TOPSIS for analyzing e-SCM performance. *Procedia Eng* (2014);97,195–203.
- [2] Berdie AD, Osaci M, Muscalagiu I, BarzC. A combined approach of AHP and TOPSIS methods applied in the field of integrated software systems. In *IOP Conference Series: Materials Science and Engineering*, 2017.
- [3] Sakthivel G, Ilangkumaran M, Gaikwad A. A hybrid multi-criteria decision modeling approach for the best biodiesel blend selection based on ANP-TOPSIS analysis. *Ain Shams Eng J* 2015.
- [4] Sakthivel G, Sivakumar R., Ilangkumaran M, Ikua BW. Selection of optimum Fish oil fuel blend to reduce the greenhouse gases emissions in an IC engine—a hybrid multiple criteria decision aid approach. *Int J Green Energy* 2016.
- [5] Mukherjee K. Analytic hierarchy process and technique for order preference by similarity to ideal solution: a bibliometric analysis 'from' past, present and future of AHP and TOPSIS. *Int J Intell Eng Inform* 2014;2.
- [6] Tzeng G-H, Lin C-W, Opricovic S. Multi-criteria analysis of alternative-fuel buses for public transportation. *Energy Policy* 2005;33:1373–83.
- [7] Sakthivel G, Nagarajan G, Ilangkumaran M, Kumar SS, Suresh KS. A hybrid multi-criteria decision support system for selection of optimum fuel blend. *Int J Exergy* 2013;12:463–90.
- [8] Chen L, Ren J. Multi-attribute sustainability evaluation of alternative aviation fuels based on fuzzy ANP and fuzzy grey relational analysis. *J Air Transp Manage* 2018;68:176–86.
- [9] Wu CS, Lin CT, Lee C. Optimal marketing strategy: a decision making with ANP and TOPSIS. *Int J Prod Econ* 2010;127(1):190–6.
- [10] Choudhary, D. and Shankar, R., 2012. An STEEP-fuzzy AHP-TOPSIS framework for evaluation and selection of thermal power plant location: A case study from India. *Energy*, 42(1), pp.510-521.
- [11] Prakash, C. and Barua, M.K., 2015. Integration of AHP-TOPSIS method for prioritizing the solutions of reverse logistics adoption to overcome its barriers under fuzzy environment. *Journal of Manufacturing Systems*, 37, pp.599-615.
- [12] Patil, S.K. and Kant, R., 2014. A fuzzy AHP-TOPSIS framework for ranking the solutions of Knowledge Management adoption in Supply Chain to overcome its barriers. *Expert Systems with Applications*, 41(2), pp.679-693.
- [13] Pitchipoo, P. Venkumar, P. and Rajakarunakaran, S., 2013. Modeling and development of a decision support system for supplier selection in the process industry. *Journal of Industrial Engineering International*, 9, 23.
- [14] Mu Rui and Zhang Jiatai., 2007. Research of hierarchy synthetic evaluation based on grey relational analysis. *Proceedings of IEEE International Conference on Grey Systems and Intelligent Services*.
- [15] Ghorabae, M.K.; Amiri, M.; Zavadskas, E.K.; Antucheviciene, J. Supplier evaluation and selection in fuzzy environments: A review of MADM approaches. *Econ. Res. Ekon. Istraživanja* 2017, 30, 1073–1118.
- [16] Amit R. Patil, S.A. Patil, Rupali Patil, A.M. Pawar, V.N. Chougule, Kareem AboRas, Validation of effect of composite additive on optimized combustion characteristics of CI engine using AHP and GRA method. *Heliyon*, 10, 2024. <https://doi.org/10.1016/j.heliyon.2024.e34216>
- [17] A.R. Patil, D. Kakati, B. Singh, M.A. Rosen, R. Patil, V. Javanjal, C. Sonawane, H. Panchal, A. Kumar, M.I.H. Siddiqui, K.K. Sadasivuni, Experimental investigation of multiadditive fuel blend and its optimization for CI engine performance and emissions by the hybrid Taguchi technique, *Case Studies in Thermal Engineering* (2023),doi:<https://doi.org/10.1016/j.csite.2023.103703>.
- [18] Saaty TL. The analytic hierarchy process. New York: McGraw-Hill; 1988.
- [19] Chyu C-C, Fang Y-C. A hybrid fuzzy analytic network process approach to the new product development selection problem. *Math Problems Eng.* (2014).
- [20] Avikal S, Jain R, Mishra P. A Kano model, AHP and M-TOPSIS method based technique for disassembly line balancing under fuzzy environment. *Appl. Soft Comput.* (2014), 25, 519–529.