

Reflective Optical Programmable Encoder in Thumb Size

Hanumant Nawale
Electronics Telecommunications
Indira College Of Engineering & Management
Pune ,India
n.hanumantusha@gmail.com

Baliram Gayal
Electronics Telecommunications
Indira College Of Engineering & Management
Pune ,India
baliram.gayal@indiraicm.ac.in

Abstract A concept presented for integration of Reflective lens less optical phased array photo sensor with use of blue led in a thumb size is a flood gate open for automation industries .this combinations makes difference over Magnetic and transmissive optical technology. it has a high space utilizations with greater gap between sensor and disc is unique feature over transmissive technology . Slick components used featuring of short wavelength as well as low jitter in output signal due to improved signal quality. Use of this technology gives low optical crosstalk .Interpolation programming of sin-cos signal for easy higher resolution are getting at low cost compared to optical encoder. Mechanical thumb structure gives space benefit in a various applications.

Keywords— optical encoder, photo sensor, thumb size, signal,

Introduction

In human life Automation is the success key for development in every place in day to day. This need convert into save time, money, wealth of society and increasing better utilizations of resources and time. For that study the motion control is very important in respect of automations .motion may be linear, rotary, angular, curved, or any form .You say

that it is a little bit point of contact always, in the live conditions and gives the feedback for control system without need of human input f or corrections .to make control of mechanical motion interfacing to electronic card transducers are born.

In early stage to control the rotary motions tacho generator, potentiometer, resolver,magneticencoder, Optical encoder are used but now a day as the market becomes increasing driven by consumer demands, businesses are forced into an intensified effort of meeting those demands to ensure business survival. It is a free for all in a business landscape that is filled with unpredictable sentiment and unforgiving circumstances. From suppliers to manufacturers, distributors to sales channels, all mechanisms involved in supporting the end products are faced with the seemingly unreasonable task of delivering products that are record-breaking miniature sizes; complete with extended capacities, high quality, while continuously maintaining a cost-down price structure. Validate for end use as desired/estimated in thought. An optical encoder has become recognized as an indispensable displacements /position sensor over magnetic sensor to its advantages of excellent immunity to electromagnetic interface, high resolution, light weight and less space .It plays a vital role in allot of industrial applications enabling precise positions control encompassing robotic controls printers, diamond cutting ,cut to length .the encoder which

typically involves a code disc optical sensing head and signal circuits is classified into two categories of reflective or transmission depends on arrangements of light source ,code disc and photo detector. All transmission type encoder are usually pursued to conveniently dispose its constitute elements and having the space constraints

EASE OF USE

Principal

The operating principal of reflective is light emitted by the transmitter is influenced by an objects or a media on its way to the detector the change in the light signal caused by an interactions with the objects then produces change in the electrical signal in the opto- electronic receiver

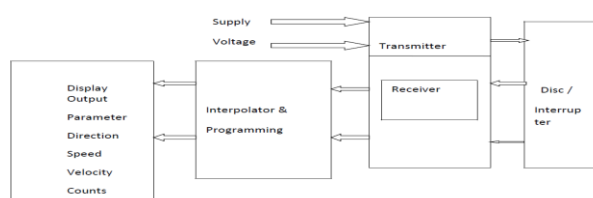


Fig: 01: Block diagram of Reflective programmable encoder

Blue LED

Blue LEDs are the basis for white emitters which are in extreme demand by the automotive and illumination markets. Today long term temperature stable blue LEDs are available which outshine the IR and red LEDs used in encoders so far, because they offer

Higher light yield and efficiency at even lower cost. Optical position sensors benefit notably as a result of the technological progress of both LED and CMOS technology. IC-Haus has optimized the new incremental scanners in its high resolution iCPTH- Series especially for blue light. The integration platform for such single chip encoder is denoted by the trademark Encoder blue [3]

Hardware design and set up

To integrate a sensor and disc with a minimum size and adding various features to encoder like reverse polarity protection, Short circuit protection with bearing encoder



Fig 02: Reflective proto testing set up

Provides great deal in size utilizations of all side, cripeagee distance during the pcb design and placing components for Considering Reflow soldering for all packages

Placing the electronic components like sensor ic having size of 5 mm by 5mm and interpolator .As this is the Optical encoder hence gap between sensor and disc should maintain within 100 micro mm to 1.5 mm for good results

Signal integrity plays important role because for a long cable distance signal transmission .Voltage drop and parasites capacitor

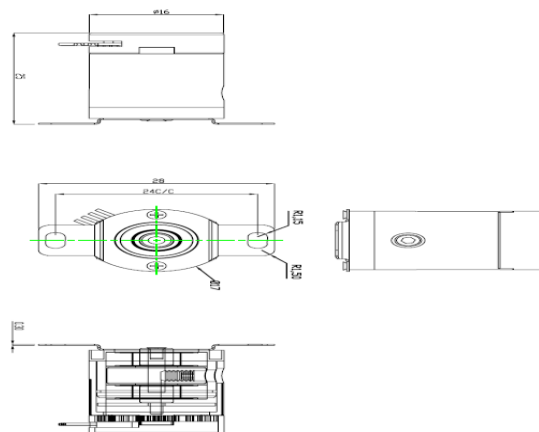
Mechanical Design

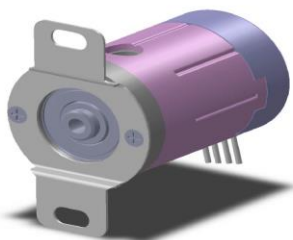
As defined encoder is an electro mechanical device that transmit mechanical motion in to an electrical signal by using Reflective principal. All electrical signal quality of sine cos pulse and driver output is depend upon the gap bet the sensor and disc and horizontal and vertical ovality of disc with respect to centre, Boring of shaft and taper of shaft plays role during the manufacturing of shaft . Process is critical

Shaft material and its hardness and surface finish plays important role for higher accuracy and better resolutions control over these parameters plays long life encoder performance for getting accurate results

Fig03: thumb size layout

Hub design makes sense because pcb is resting over the hub machining of hub for ovality puts the signal output variations and bearing size concentric boring also make sense to quality of encoder signal placing the pcb and crimping for





permanent holding the pcb .

As this is the reflective technology materials of disc and its coatings plays important role in relative collector currents as the sensor position is perpendicular to the surface of deposition

Fig04: Proto built of Thumb size

Flatness is achieved using materials like polycarbonate, glass, metal with sputtering of target materials chromium.

Table: 01: Encoder output Speed-frequency

Speed	Output frequency
200rpm	53.33khz
500rpm	133.33khz
1000rpm	266.66khz
2000rpm	533.33khz



Fig05: Output signal of reflective encoder

Conclusion

From the given Proto type design and reading it shows that o/p of encoder are easily interpolated and getting higher PPR and resolution compared to normal optical encoder As seen from above proto design that all encoder feature are obtained in thumb size Great space utilizations and programmable output is achieved by interpolations

Acknowledgment

Any accomplishment requires the effort of many people and

this work is no different. I find great pleasure in expressing my deep sense of gratitude to wards all those who have made it possible for me to present this work.

I would like to the express a sincere gratitude to my guide and PG Coordinator Prof. B. S. Gayal for his dynamic and valuable guidance. I am grateful to him for constant encouragement in the fulfillment of the paper work. This paper result of combined efforts put in by my guide and me. I would also like to thank him for providing me with all necessary infrastructure and facilities to complete the paper. I also extend thanks and sincere gratitude to Head of Department of Electronics and Telecommunication Prof. A. M. Patki and all Staff Members who extended the preparatory steps of this paper. I am also thankful to our Principal Dr. S. B. Ingole for his valued support and faith for me.

I would also like to express appreciation and thanks to all my friends who knowingly assisted me with their valuable suggestions and supports and I am very grateful for their assistance.

I would also like to thank those who are directly or indirectly guiding me. .

References

- [1] Hak-Soon Lee ,Sang-Shin Lee "Reflective Optical Encoder Capitalizing on an Index rating Imbedded in a Compact Smart Frame Volume 6, Number 2, April 2014 ,DOI: 10.1109/JPHOT.2014.2307554 1943-0655 2014 IEEE.J. M. Abdul Waheed Dept. of Mechanical and Aerospace Engineering Hong Kong University of science and Technology Hong Kong awaheed@connect.ust.hk Lilong Cai Dept. of Mechanical and Aerospace Engineering Hong Kong University of Science and Technology Hong Kong melcai@ust.hk," Alternative Design for Optical Incremental Encoder Measurement Systems."978-1-4673-8075-1116@2016-IEEE
- [2] www.ichaus.com, www. vishay.com, www. avagotech.com. Nicola Massari, Lorenzo Gonzo, Massimo Gottardi and Andrea Simoni ITC-Irst, via Sommarive 16,I-38050 Trento, Italy, Tel. (+39) 0461 314535, e-mail: massari@itc.it " A MONOLITHIC LOW POWER PULSED OPTICAL ENCODER " 0-7803-74487/02@2002 IEEE. Gabriel Gabian Centro de Micro y Nanoelectronica del Bicentenario Instituto acional de Tecnologia Industrial San Martin, Buenos Aires, Argentina Ariel Lutenberg, Jose Lipovetzky Facultad de genieria Universidad de Buenos Aires CABA, Argentina CONICET.
- Ajith Kumar M. S.M-Tech, Applied electronics and communication systems, NCERC Greeshma, Asst. Prof, NCERC, University of Calicut, India,Different Types of Resolution Improvement Schemes in Optical Encoder International Journal of Enhanced Research in Science Technology & Engineering, ISSN: 2319-7463 Vol. 3 Issue 3, March-2014, pp: (207-210), Impact Factor: 1.252, Available online at: www.erpublications.com Page | 207.
- [3] Haiming Huang and Wusheng Chou," Hysteresis Switch Adaptive Velocity Evaluation and High-Resolution Position Subdivision Detection Based on FPGA."IEEE TRANSACTIONS ON INSTRUMENTATION AND MEASUREMENT, VOL. 64, NO. 12, DECEMBER 2015 3387.